

Stato del progetto

P.P. COMPARTO RESIDENZIALE "An 1b Roncaglio" - CAVRIAGO
PROGETTO DEFINITIVO

committente

CHERIO EMMA, via Don Pasquino Borghi, 6 - 42025 Cavriago (Reggio Emilia) - C.F. CHRMME 54P61 C405A
E ALTRI

Stato della tavola

PROFILO SIGNIFICATIVI

STATO
FUTURO

num. pratica	data emissione	redatto da	riapp. disegni	fase operativa	file
3013	SETTEMBRE 2008	NADA	1:500	DEFINITIVA	30130001A.DWG
rev. data	descrizione			redatto da	
A	APRILE 2009	REVISIONE IN SEGUITO ALL'ACCOLGIMENTO DELLE OSSERVAZIONI			CRISTINA
B	==	==	==		
C					
D					
E					
F					

il responsabile della
progettazione

il progettista delle
strutture

direzione lavori

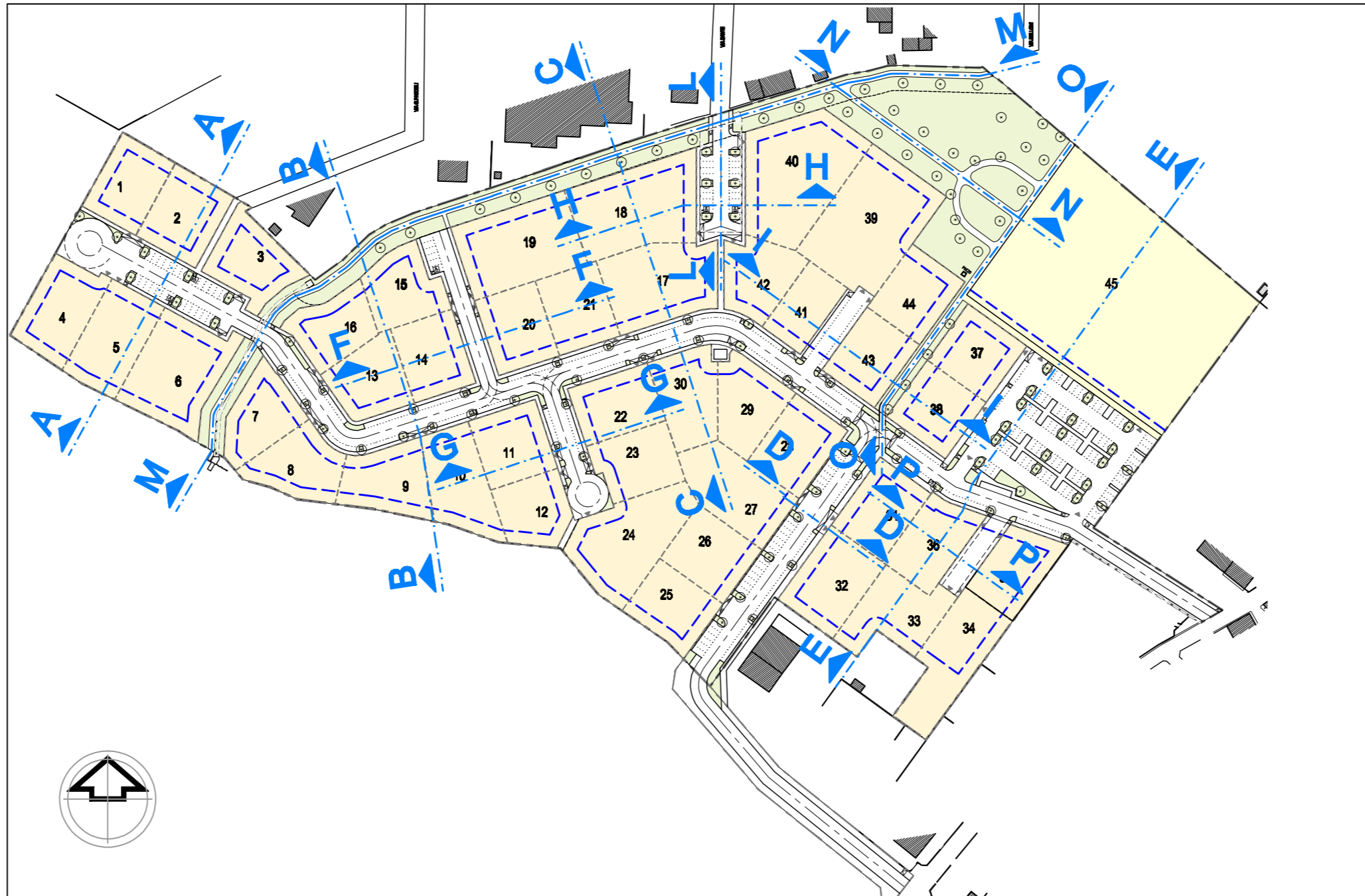
direzione lavori
struttura

N° tavola

orientamento

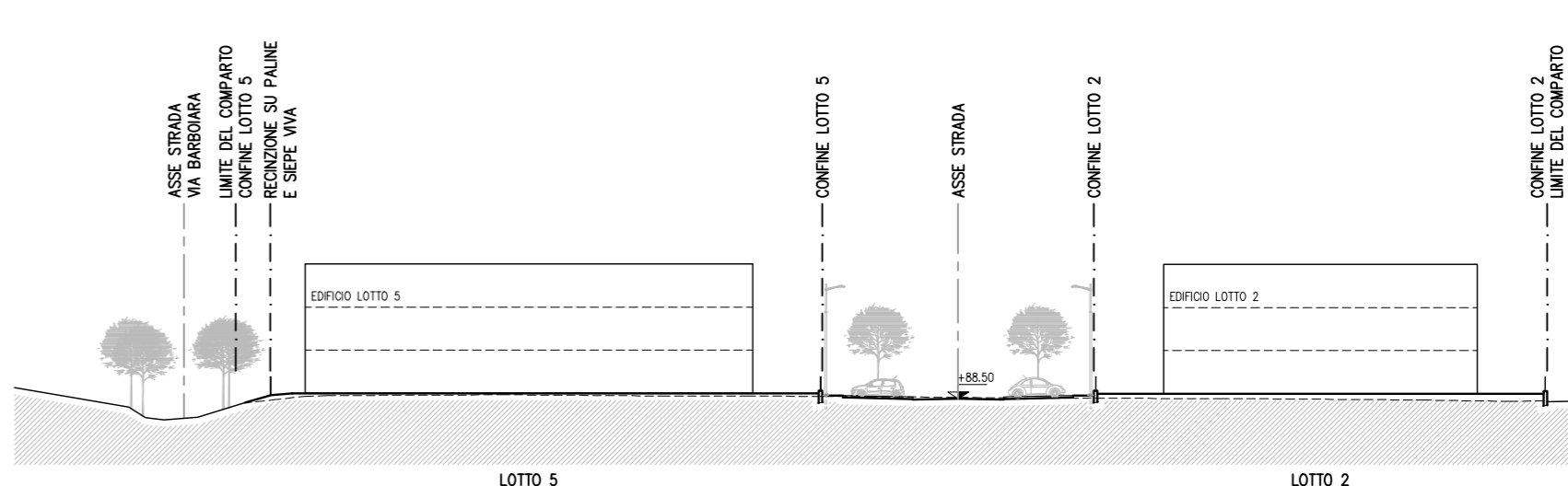
Avv. Giorgio MENOZZI

collaboratori:
Ing. Daniele REDONDI
Ing. Simone CATI
Arch. Elena FIORELLA
Arch. Benedetto GIOI
Dra. Cristina MAGGI
Dra. Nadia ROMANONI



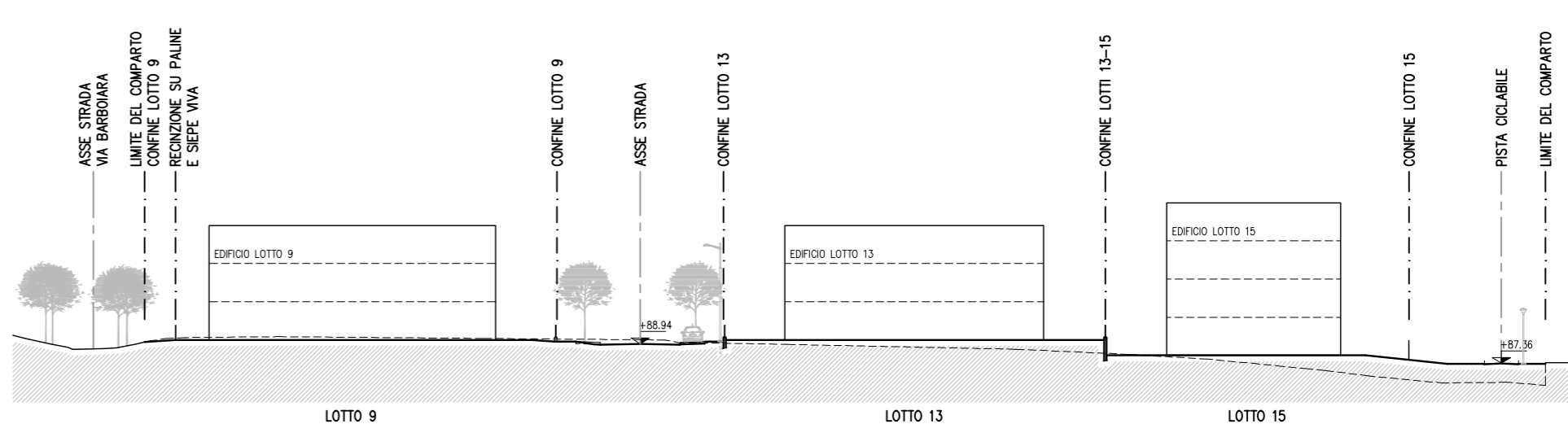
PIANTA CHIAVE

SCALA 1:2000



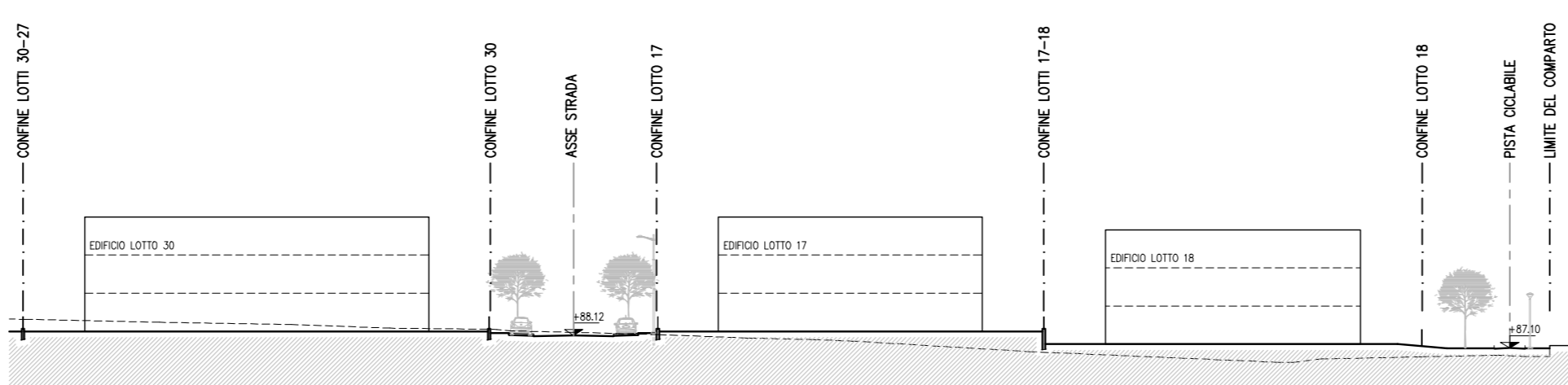
PROFILO A

SCALA 1:500



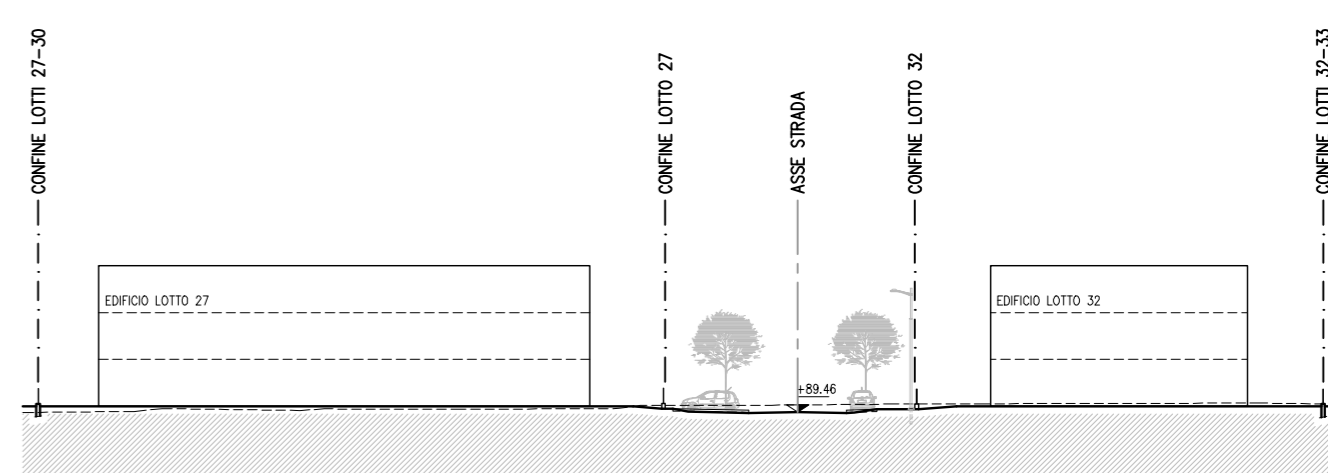
PROFILO B

SCALA 1:500



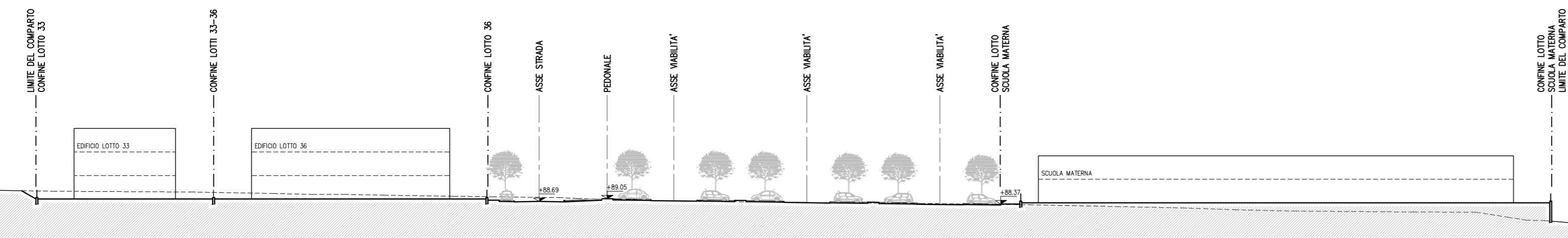
PROFILO C

SCALA 1:500



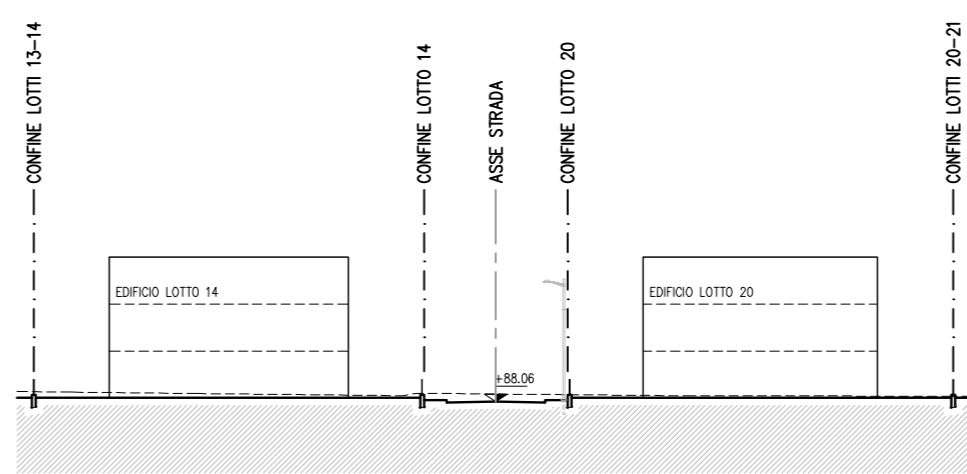
PROFILO D

SCALA 1:500



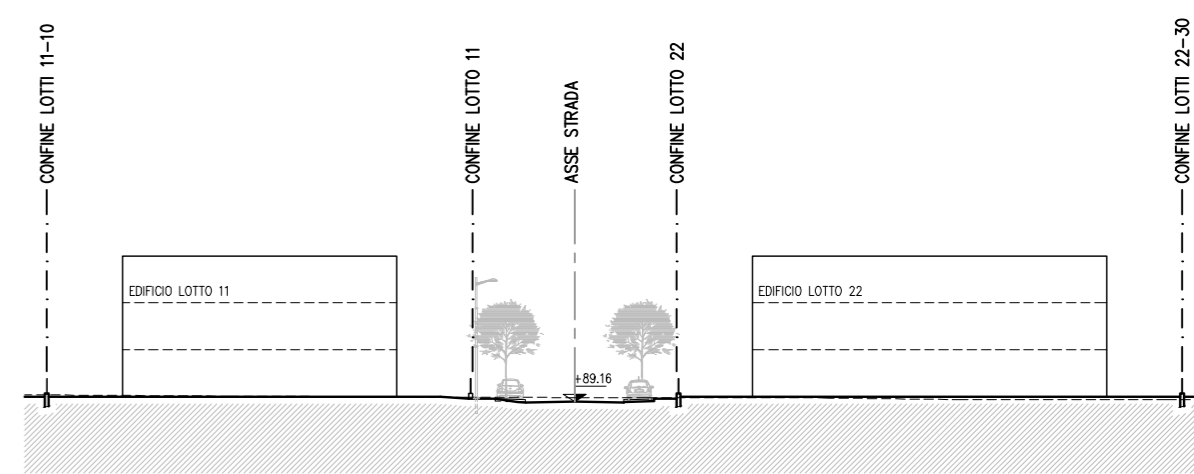
PROFILO E

SCALA 1:500



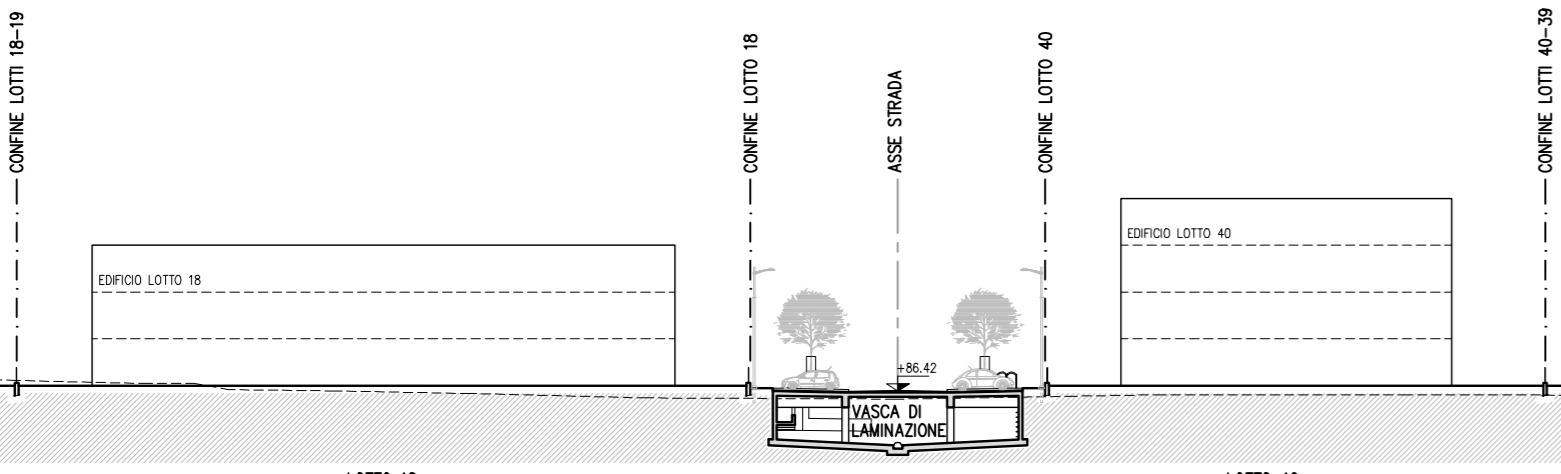
PROFILO F

SCALA 1:500



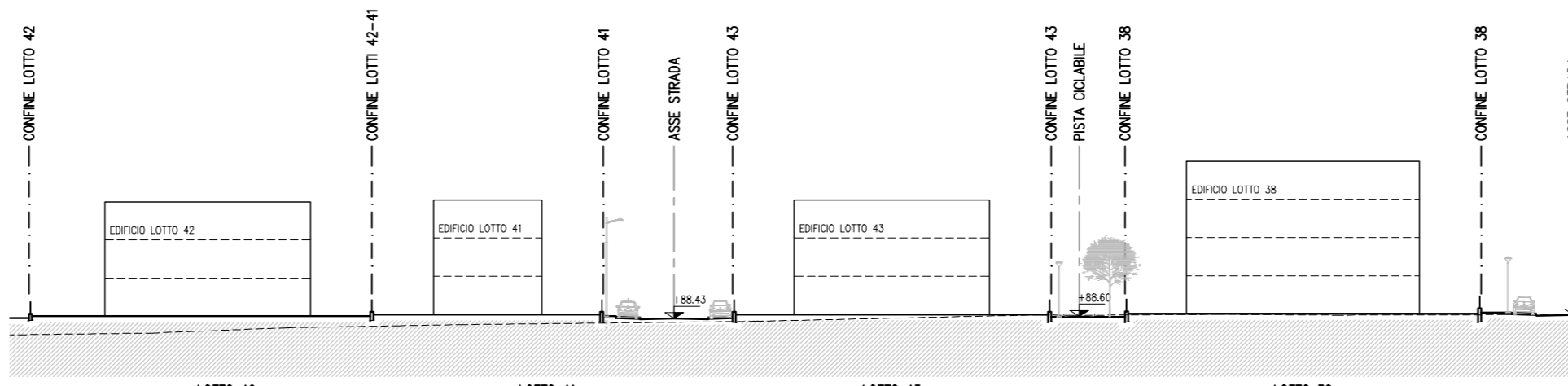
PROFILO G

SCALA 1:500



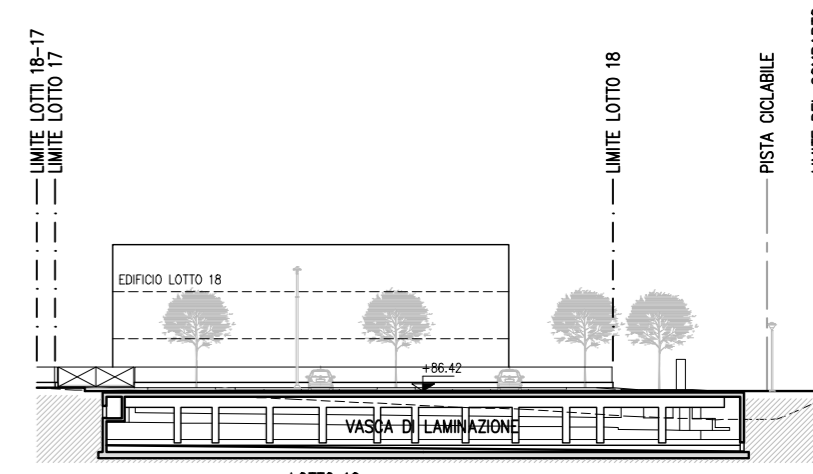
PROFILO H

SCALA 1:500



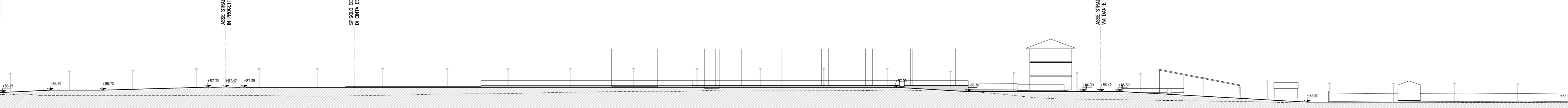
PROFILO I

SCALA 1:500



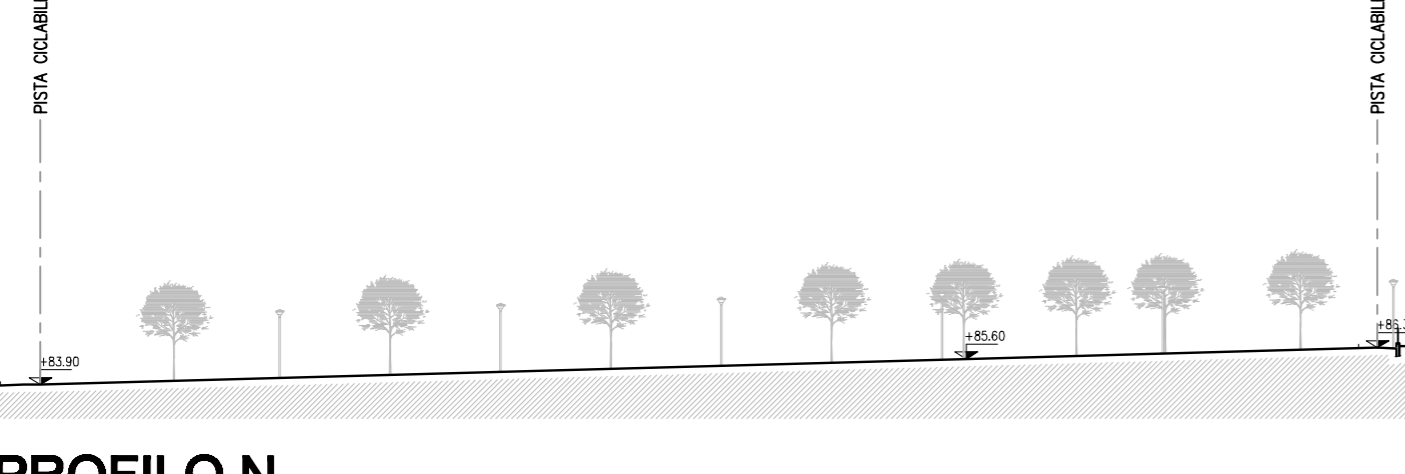
PROFILO L

SCALA 1:500



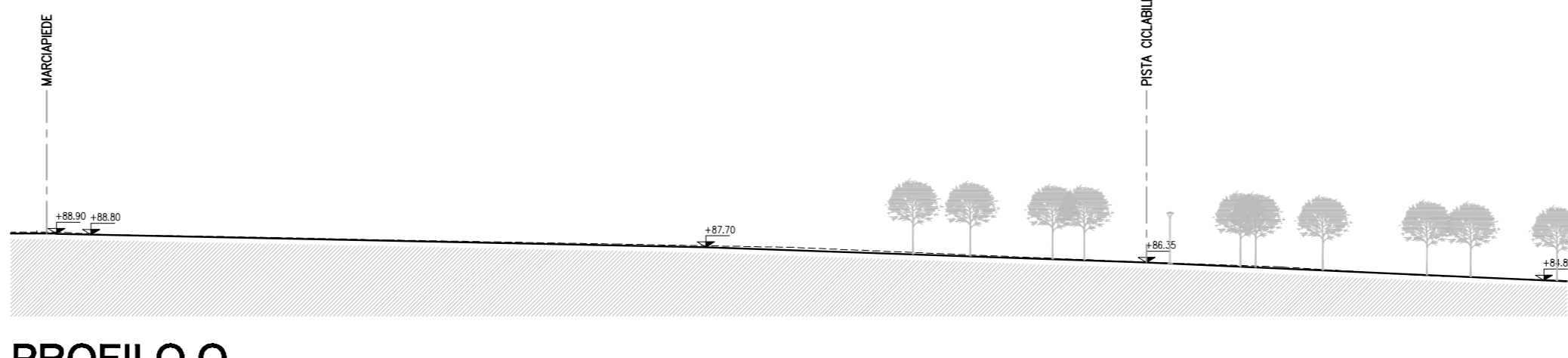
PROFILO M

SCALA 1:500



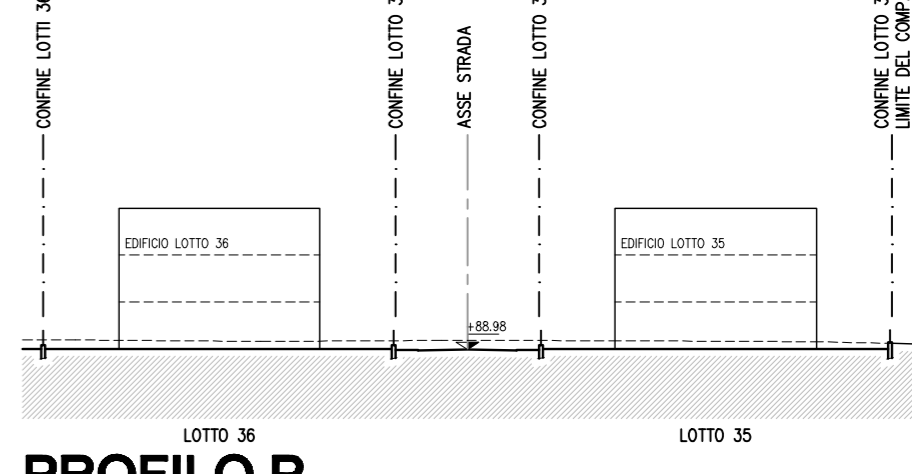
PROFILO N

SCALA 1:500



PROFILO O

SCALA 1:500



PROFILO P

SCALA 1:500